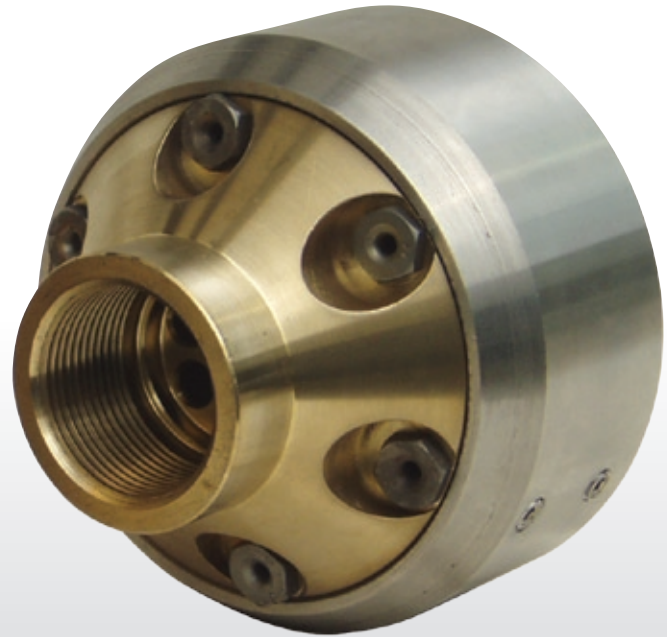




NozzTeq™



BL Gold™ is made of wear resistant bronze alloy.

## BL GOLD™

Using a recycling truck put a lot of strain to products and material. To meet our customer's expectations regarding efficiency and safety we have developed the BL Gold™ nozzle.

At first glance the BL Gold™ looks very similar to the BL Missile™. But it is more than what meet the eye.

BL Gold™ is made of wear resistant bronze alloy. We have developed a new technique allowing us to mill the channels directly in the bronze material for maximum wear resistance and safety. BL Gold™ is supplied with ceramic jets. Normally ceramic jets are unnecessary due to the flow design of the Predator™ Series, which the BL Gold™ is part of.

### Characteristics:

- BL Gold™ is made of wear resistant bronze alloy.
- Variable jet sizes to accommodate flows from 100 up to 600 l/min (25-160 US GPM).
- The water is looped around a milled system of conduits for maximum pulling power, wear resistant and safety.
- Low angle jet streams, attack debris at its weakest point with superior performance.
- Construction made to prevent "getting stuck".
- Front jet
- Replaceable wear body

NozzTeq Inc. ADDRESS: 1497 Main Street #354 Dunedin, FL 34698

PHONE: 1-866-620-5915 FAX: 1-603-413-6744

EMAIL: [info@nozzteq.com](mailto:info@nozzteq.com) HOMEPAGE: [www.nozzteq.com](http://www.nozzteq.com)



# NozzTeq™



Specification	
Hose size	3/4" up to 1 1/4"
Water flow	25-160 US GPM
Pipe dimension	6" and up
No. of jets	6 + 1
Jet size	2.0 up to 4.5 mm
Weight without wear body	10.6 Lbs.
Weight with wear body	13.7 Lbs.
Length	5.1"
Diameter without wear body	3.9"
Diameter with wear body	4.7"

*Note: Weights and dimensions are approximate and subject to change without notice.*

Art no.	Description
2-BLG01	BL Gold™ includes 6 rear jets & 1 front penetrating jet. Standard connection 1 1/4" BSP female thread. Adjustable to your needs.
2-BLG01WB	BL Gold™ includes 6 rear jets, 1 front penetrating jet & one (1) mounted wear body. Standard connection 1 1/4" BSP female thread. Adjustable to your needs.

**NozzTeq Inc.** ADDRESS: 1497 Main Street #354 Dunedin, FL 34698

PHONE: 1-866-620-5915 FAX: 1-603-413-6744

EMAIL: [info@nozzteq.com](mailto:info@nozzteq.com) HOMEPAGE: [www.nozzteq.com](http://www.nozzteq.com)