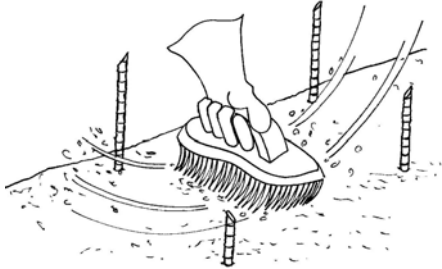
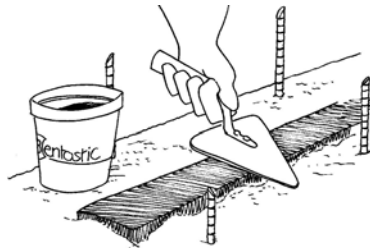


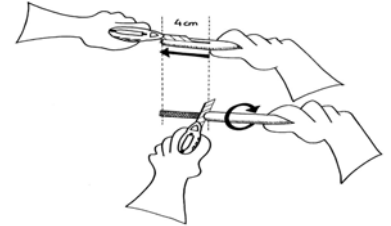
INSTALLATION INSTRUCTIONS



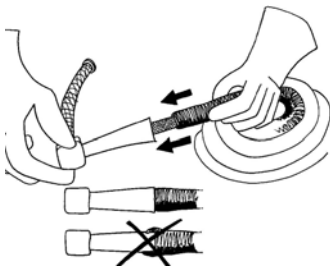
1. Remove all dust, dirt and loose parts by brushing firmly.



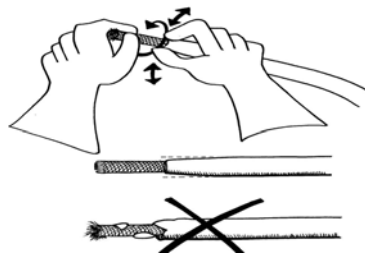
2. When necessary, level uneven and irregular surfaces with **SWELLSEAL[®] WA** and let cure 1 hour before pouring concrete



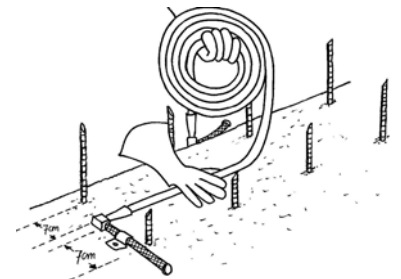
3. Assemble the Bentoject system. Cut away 1-1/2 inches of the bentonite outer skin with a sharp knife. Be careful not to cut too deep or you will damage the internal membrane



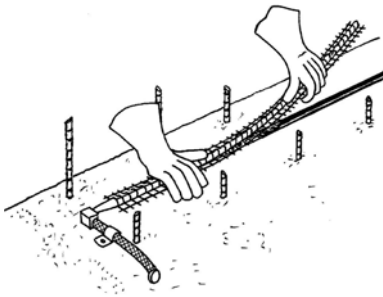
4. Clean up the surface of the internal membrane. Chamfer the edge with a twisting motion.



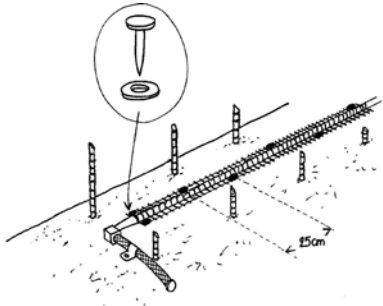
5. Install the blue trumpet onto the Bentoject with a screwing motion. The blue trumpet should sit tight onto the Bentoject injection tube. Make sure the bentonite outer skin is inside the conical part of the blue trumpet



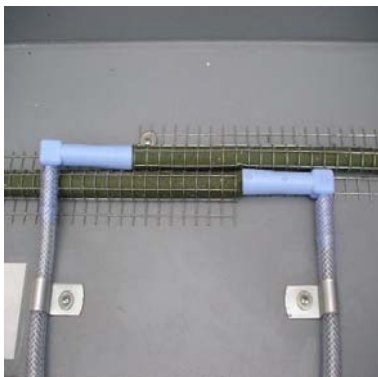
6. Unroll the Bentoject (a concrete cover of 2-3/4 inches at all sides should always be respected). The roll ends should have a lateral overlapping of 2 to 4 inches; The green ends need to be pressed together as well as possible. In order to be able to inject at a later stage, the PVC ends have to protrude out of the concrete at well accessible spots. The green part of the **Bentoject Tube** may not protrude out of the concrete. Make sure to have continuous contact with the surface



7. Install the wire mesh profile over the Bentoject .



8. Fix the system by hammering or gun nailing (use nails with washer, approx. 1 per 10 inches). Fix the PVC tube to the concrete with a nail and clip



9. Make the overlap between 2 pieces of Bentoject according to the above picture

The provided information is the result of study and experience. All details are given in good faith, but are in no case to be considered as a warranty, nor make us assume any responsibility, even in case of detracton of third party's rights.

Rev.07/2006