

Fast, safe, and easy to use, a five-second test determines joint integrity. Cherne's Air-Loc® Joint Tester is designed to test large-diameter, installed, pre-cast concrete pipe as described in ASTM C1103.

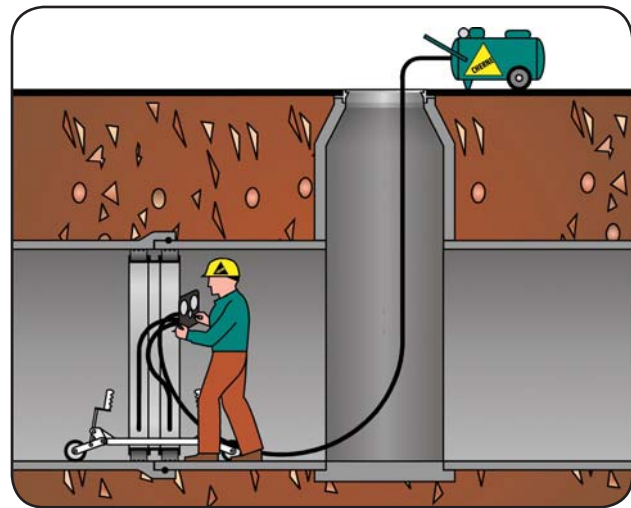
Ready to test with water or air straight from Cherne's factory—no modifications are needed—the Air-Loc® Joint Tester also allows you to pre-test before backfilling. Capable of testing to 15 PSI air or 50 psi water.



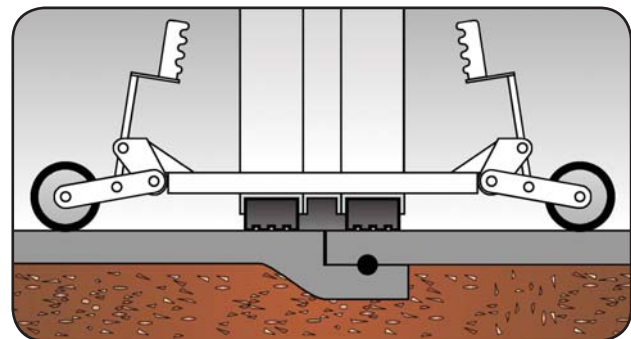
Features:

- Sleeveless, lightweight aluminum design allows for easy assembly in manholes
- Independent, adjustable wheels—easy to move
- Quick-connect control panel is simple to install and remove, plus the top-mounting feature won't interfere with laser usage
- Available with or without control panel and wheel kit
- Replacement end elements are available
- Recommended for testing pipe 21" and larger

Part#	Nominal Size	Product Diameter	Product Weight
Air-Loc® Joint Testers			
009018	21" (.53 M)	19" (.48 M)	100 lbs (45 kg)
009028	24" (.61 M)	22" (.56 M)	110 lbs (50 kg)
009038	27" (.69 M)	25" (.64 M)	120 lbs (55 kg)
009048	30" (.76 M)	28" (.71 M)	130 lbs (59 kg)
009058	33" (.84 M)	31" (.79 M)	140 lbs (64 kg)
009068	36" (.91 M)	34" (.86 M)	150 lbs (68 kg)
009078	39" (.99 M)	37" (.94 M)	155 lbs (70 kg)
009088	42" (1.07 M)	40" (1.02 M)	165 lbs (75 kg)
009098	48" (1.22 M)	46" (1.17 M)	175 lbs (80 kg)
009108	54" (1.37 M)	52" (1.32 M)	180 lbs (82 kg)
009118	60" (1.52 M)	58" (1.47 M)	185 lbs (84 kg)
009128	66" (1.68 M)	64" (1.63 M)	215 lbs (98 kg)
009138	72" (1.83 M)	70" (1.78 M)	245 lbs (111 kg)
009158	78" (1.98 M)	76" (1.93 M)	290 lbs (132 kg)
009168	84" (2.13 M)	82" (2.08 M)	310 lbs (141 kg)
009178	90" (2.29 M)	88" (2.24 M)	335 lbs (152 kg)
009188	96" (2.44 M)	94" (2.39 M)	365 lbs (166 kg)
009198	102" (2.59 M)	100" (2.54 M)	390 lbs (177 kg)
009208	108" (2.74 M)	106" (2.69 M)	415 lbs (188 kg)
009228	120" (3.05 M)	118" (3 M)	485 lbs (220 kg)



Pipe joint test



Testing using air or water